



R&B WIRE PRODUCTS, INC.

MANUFACTURING COMMERCIAL QUALITY PRODUCTS FOR OVER 65 YEARS!

KD BASKET TRUCK ASSEMBLY INSTRUCTIONS

Step 1: Place upper frame parts on ground. Take one side piece and place between the two end pieces. Make sure that the end tabs on the end pieces are placed on top of the side piece tabs. Using a 1/4" x 5/8" bolt and a 1/4 - 20 nylon lock nut, secure the side piece to the two end pieces. Repeat this process on the other side.

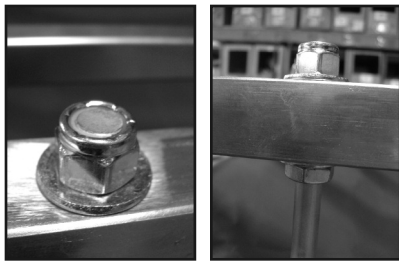
***IMPORTANT:** Make sure that all of the upright wires are leaning towards the middle of the unit.

Step 2: Take the liner and place it upside down onto the frame.

Insert the upright wires through the pockets that are sewn onto the liner. Be careful not to poke a hole through the pockets as you apply the liner. After inserting all the uprights through the pockets, leave the liner and frame in this position to install the base.

Step 3: The 3/8" Thin nuts have been installed on each upright wire for you convenience. Place one of the washers onto each wire.

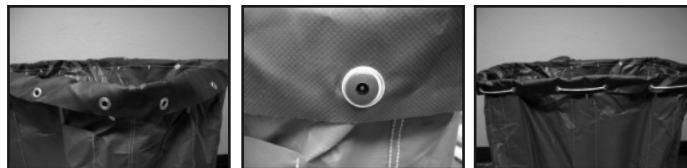
Take the base and turn it upside down, wheels up. Insert an upright wire through each hole in the base. Each wire should stick up through the base hole.



Take the 3/8" nylon lock nuts along with one of the washer and place them on each wire. Tighten each nut until the upright wire is flush with the top of the nut.

If the upright wire is still loose, tighten the thin nut until the wire frame is secured to the base.

Step 4: Turn the unit over onto the wheels. Pull the liner up and fold over the wire frame. Line up the brass grommets. You can use either the black plastic snaps or the white nylon rope to secure the liner to the frame.



Tools needed: 2 - 7/16" wrenches or sockets, 1 - 9/16" wrench or socket, 1 - 5/8" wrench.



R&B WIRE PRODUCTS, INC.

MANUFACTURING COMMERCIAL QUALITY PRODUCTS FOR OVER 65 YEARS!



2902 W. Garry, Santa Ana, California 92704

714/549-3355 • 800/634-0555 Toll Free • Fax 714/549-0625

E-mail: sales@rbwire.com www.rbwire.com